

2002 ACCESSORIES & EQUIPMENT

Power Door Locks - Sedona

DESCRIPTION & OPERATION

DOOR LOCKS

NOTE: Door lock motor may also be referred to as door lock actuator.

All doors can be locked or unlocked from driver's door. When driver's power door lock switch is locked (by using key or pushing down on door lock button), the driver's door is mechanically locked and a ground signal is sent to the Electronic Time & Warning Indicator System (ETWIS) module. ETWIS module then sends a 12-volt signal activating each door lock actuator.

COMPONENT LOCATIONS

COMPONENT LOCATIONS

Component	Location
Electronic Time & Warning Indicator System (ETWIS) Module	Behind Left Side Of Instrument Panel, Above Fuse Box
Power Door Lock Switch	Inside Of Driver's Door, Toward Rear Of Door
Engine Compartment Fuse/Relay Box	Left Side Of Engine Compartment
Passenger Compartment Fuse Box	Below Left Side Of Instrument Panel, At Kick Panel

SYSTEM TESTS

NOTE: Specific system tests are not available from the manufacturer. For assistance in diagnosing power door lock system problems, see WIRING DIAGRAMS .

COMPONENT TESTS

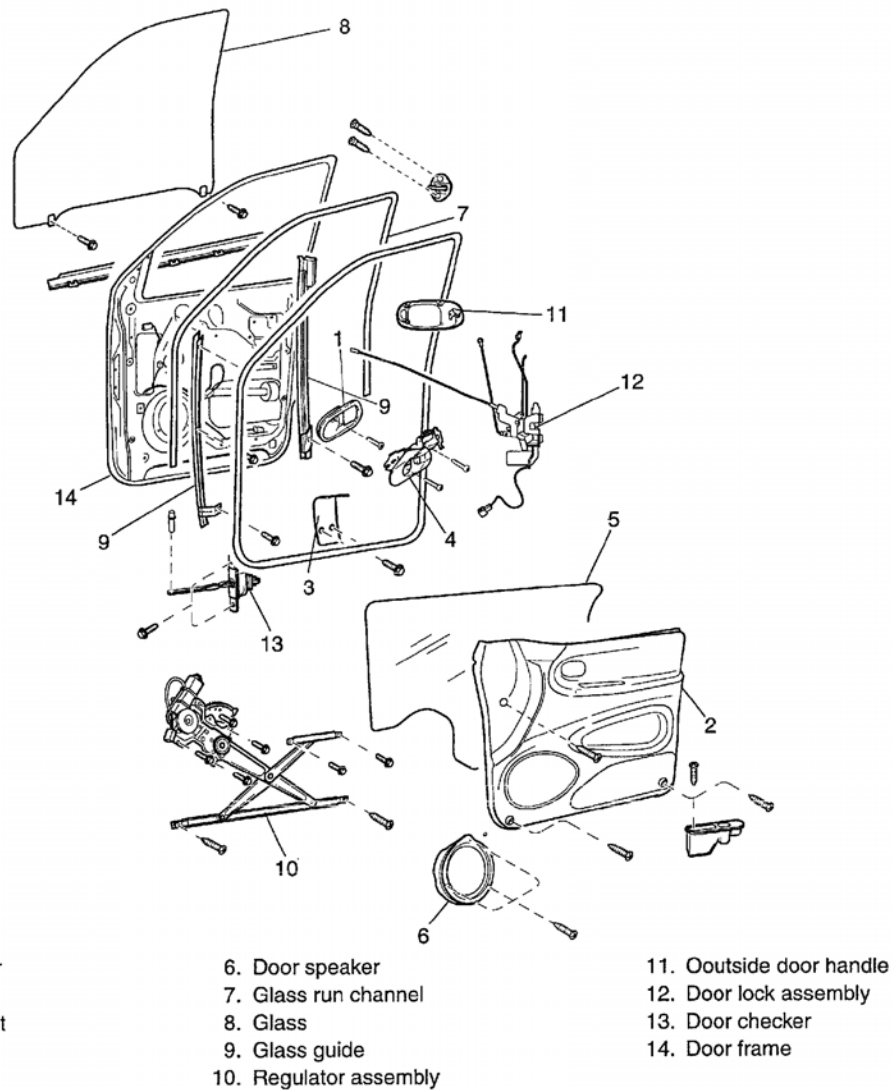
DOOR LOCK MOTOR

Remove door trim panel of suspect door lock motor. See REMOVAL & INSTALLATION under REMOVAL & INSTALLATION. Disconnect door lock motor connector. Using jumper wires, apply battery voltage between terminals of door lock motor. Door lock should operate. Reverse polarity across terminals, door lock should move in opposite direction. Replace door lock motor if it does not operate properly in both directions.

REMOVAL & INSTALLATION

FRONT DOOR

COMPONENT



G02177548

Fig. 1: Illustrating Front Door Components
Courtesy of KIA MOTORS AMERICA, INC.

REMOVAL

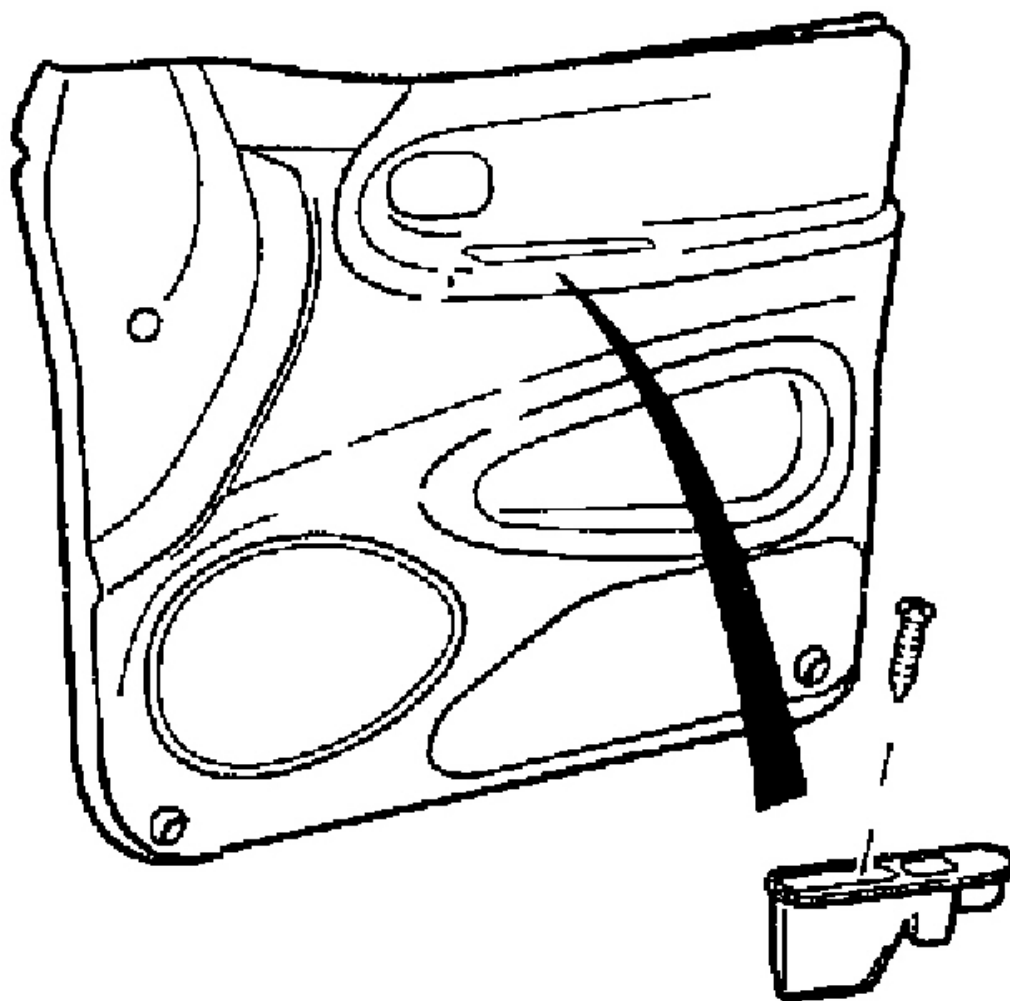
1. Disconnect negative battery cable.
2. Remove door trim.
 - a. Remove door garnish.
 - b. Remove one screw on the inside door handle cover.



G02177549

Fig. 2: Removing Inside Door Handle Cover Screw
Courtesy of KIA MOTORS AMERICA, INC.

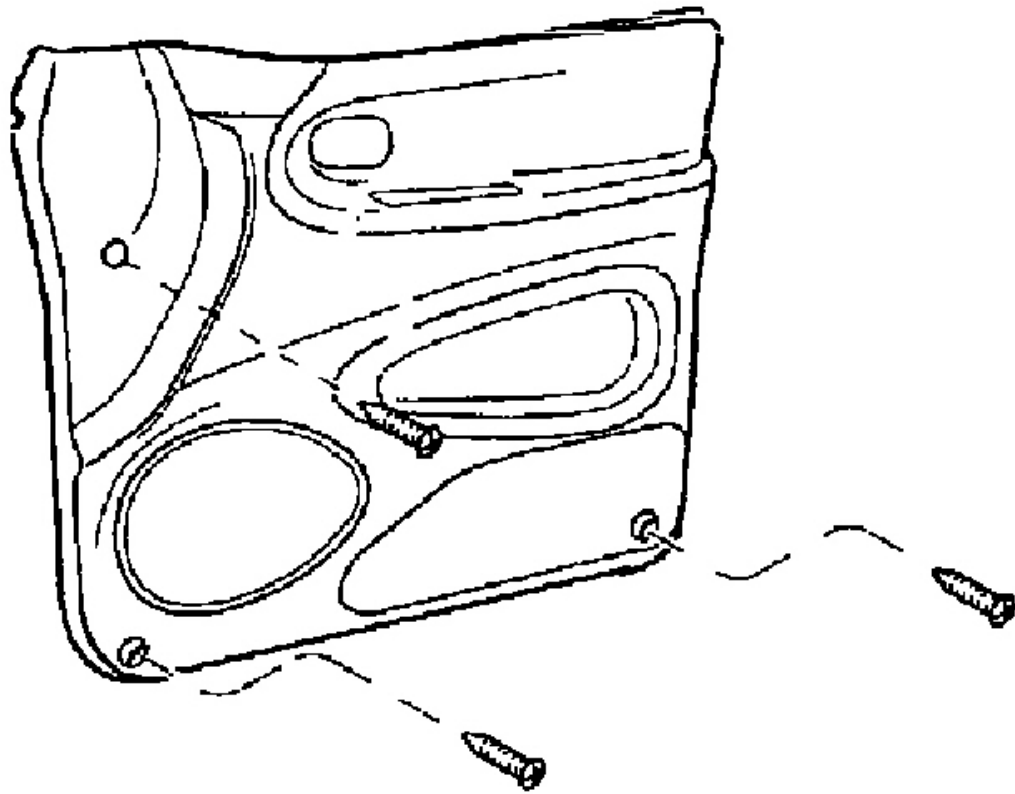
- c. Remove inside door handle cover.
- d. Remove one screw on the pull handle.



G02177550

Fig. 3: Removing Pull Handle Screw
Courtesy of KIA MOTORS AMERICA, INC.

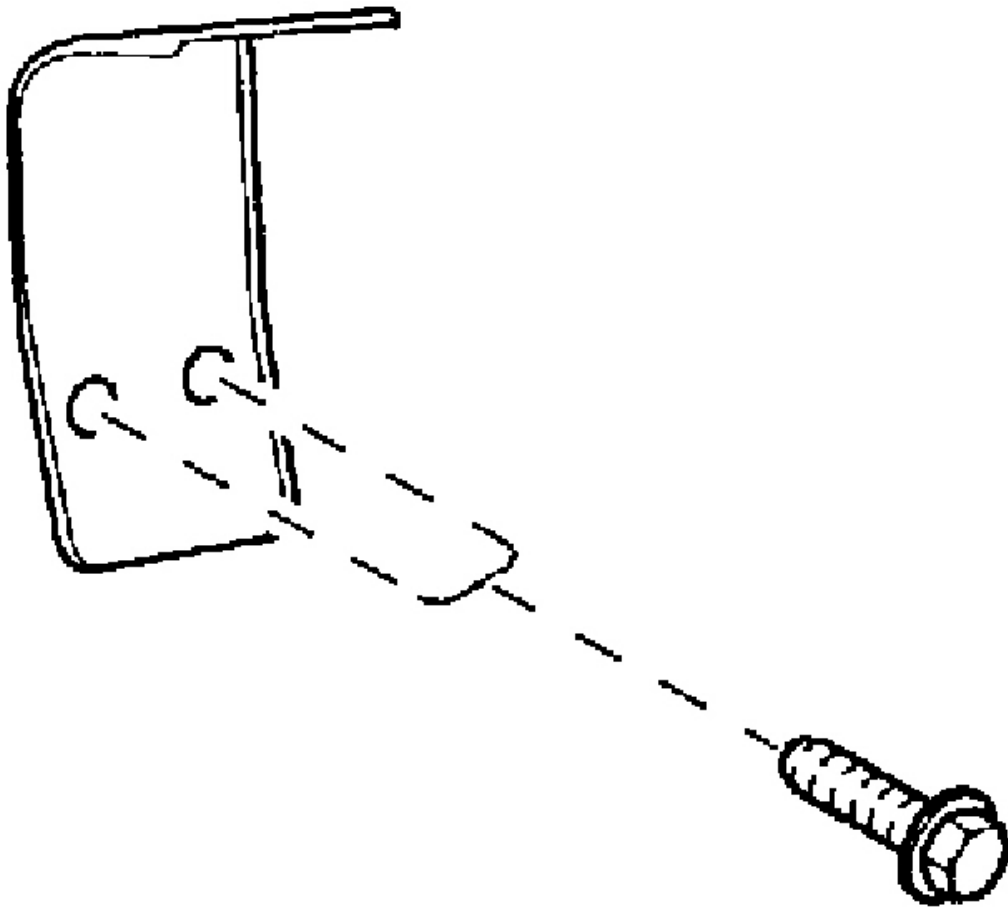
- e. Remove three screws on the trim.



G02177551

Fig. 4: Removing Trim Screws
Courtesy of KIA MOTORS AMERICA, INC.

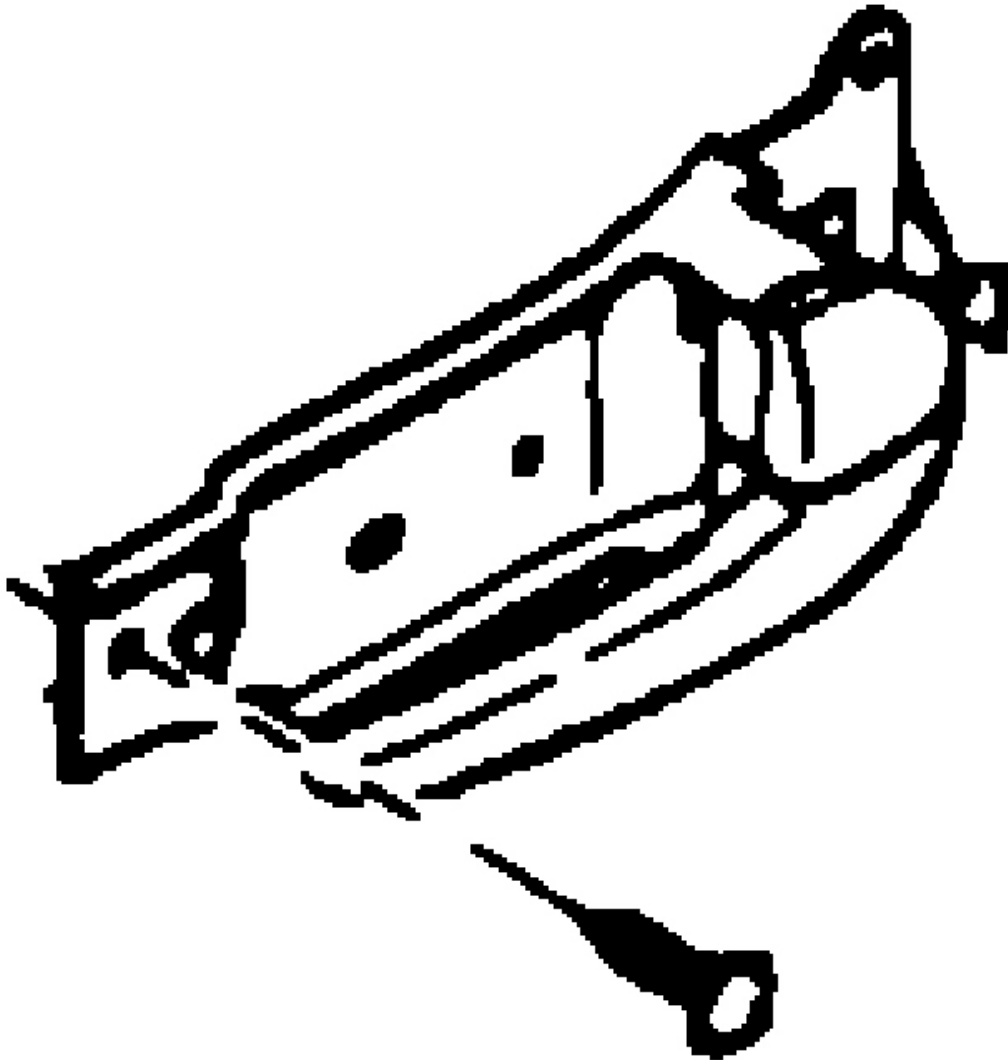
- f. Remove door trim by lifting it up.
 - g. Disconnect window operating switch connectors.
3. Remove two screws on the pull handle bracket.



G02177552

Fig. 5: Removing Pull Handle Bracket Screws
Courtesy of KIA MOTORS AMERICA, INC.

4. Remove inside door handle.

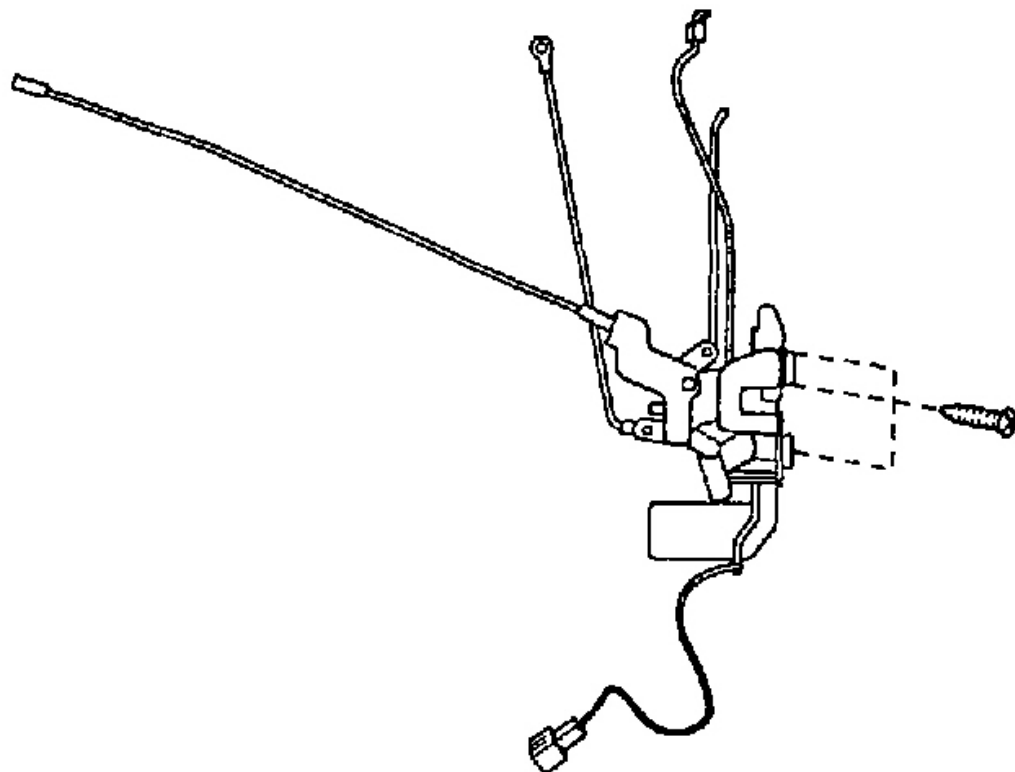


G02177553

Fig. 6: Removing Inside Door Handle
Courtesy of KIA MOTORS AMERICA, INC.

- a. Disconnect inside door handle rod.
- b. Remove three screws on the inside door handle.
5. Peel off the plastic door screen carefully by pulling it away gradually from the door frame.
6. Remove door lock assembly.

- a. Disconnect two remote control rods from outside door handle assembly.
- b. Remove three screws from door lock assembly and remove assembly from access hole.



G02177556

Fig. 7: Removing Door Lock Assembly
Courtesy of KIA MOTORS AMERICA, INC.

INSTALLATION

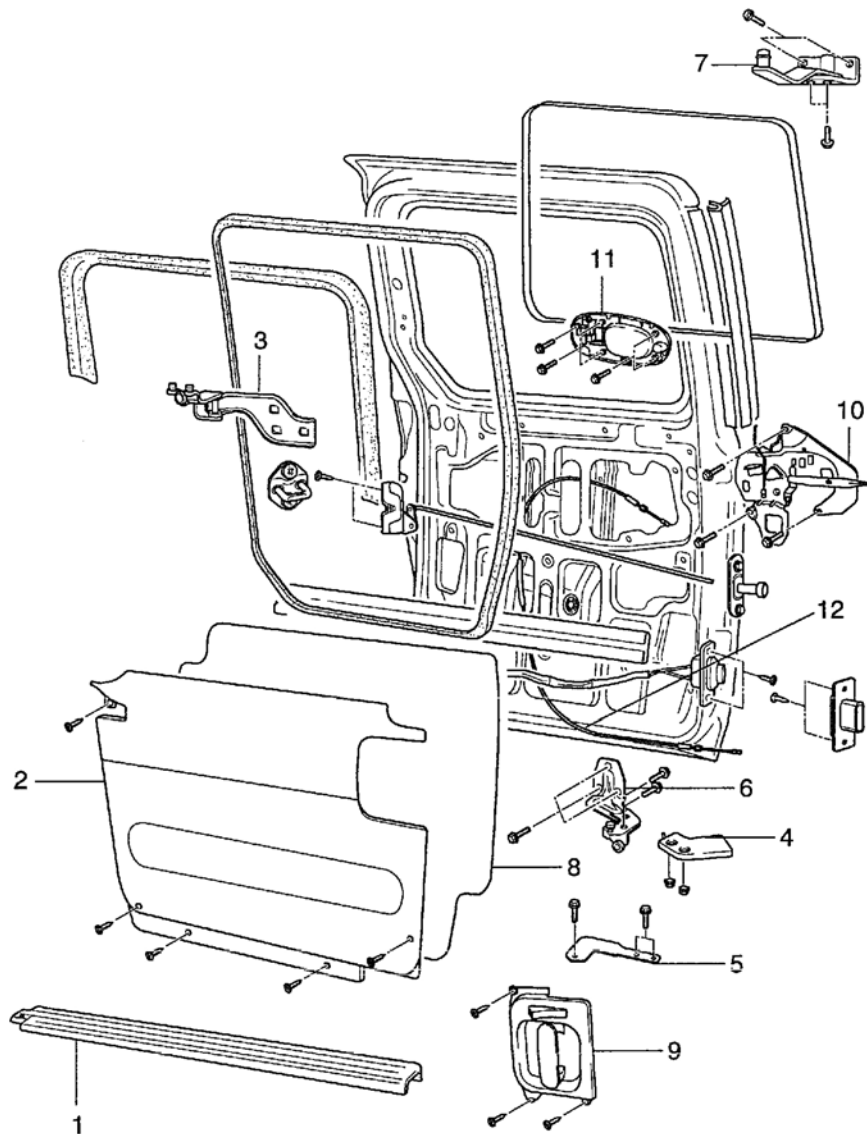
Installation is reverse of removal.

ADJUSTMENT

1. Check that door can be closed easily and properly. If there is a problem, loosen striker installation bolts and adjust door by moving striker vertically and horizontally.
2. Adjust rear offset of door to body by moving door lock striker horizontally.

SLIDE DOOR

COMPONENT



1. Lower roller guide cover
2. Door trim
3. Center roller
4. Door hold open lock
5. Lower guide rail
6. Lower roller

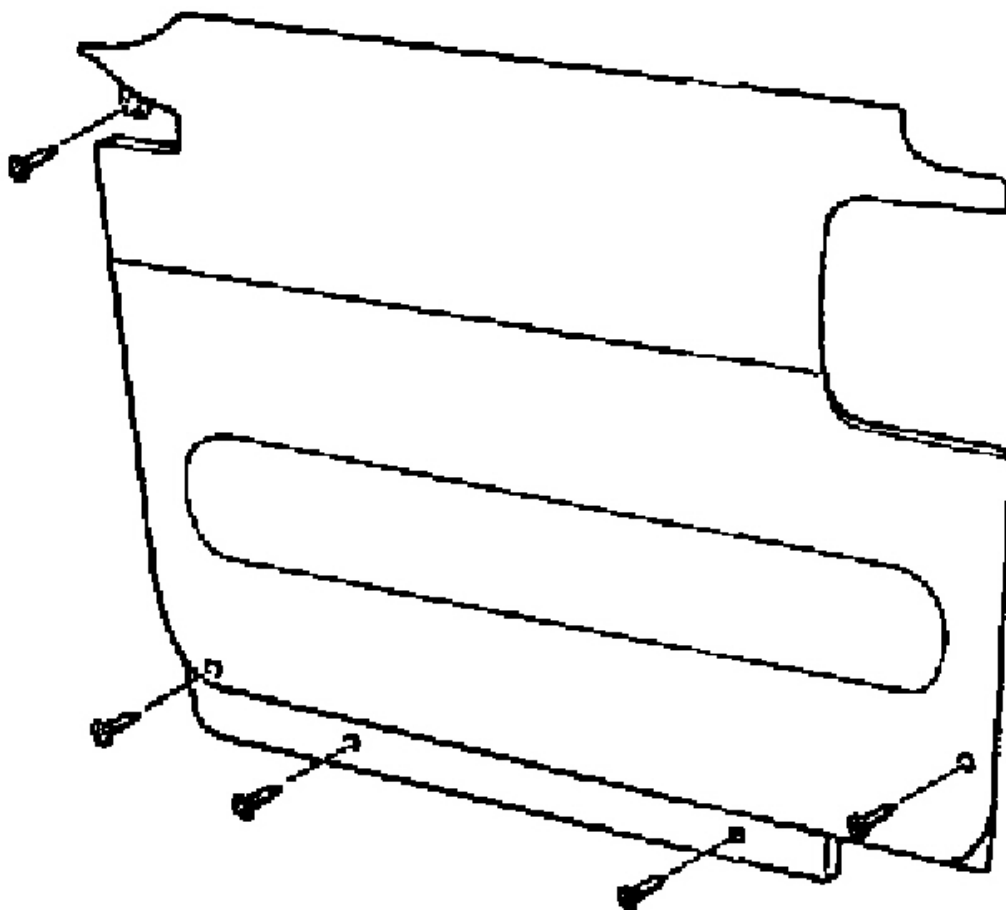
7. Upper roller
8. Door screen
9. Inner handle
10. Door lock assembly
11. Outer handle
12. Door hold open lock release cable

G02177567

Fig. 8: Illustrating Slide Door Components
Courtesy of KIA MOTORS AMERICA, INC.

REMOVAL

1. Disconnect negative battery cable.
2. Remove three mounting screws and lower roller cover.
3. Remove screws and door trim.

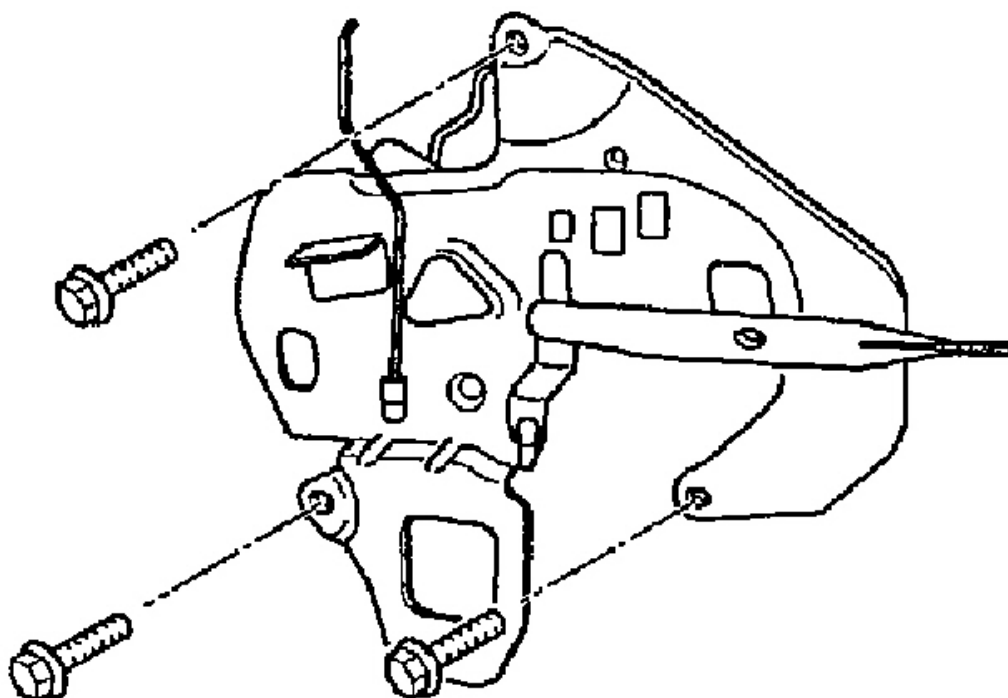


G02177568

Fig. 9: Removing Door Trim

Courtesy of KIA MOTORS AMERICA, INC.

4. Peel off the plastic door screen carefully by pulling it away gradually from the door frame.
5. Remove door lock assembly.

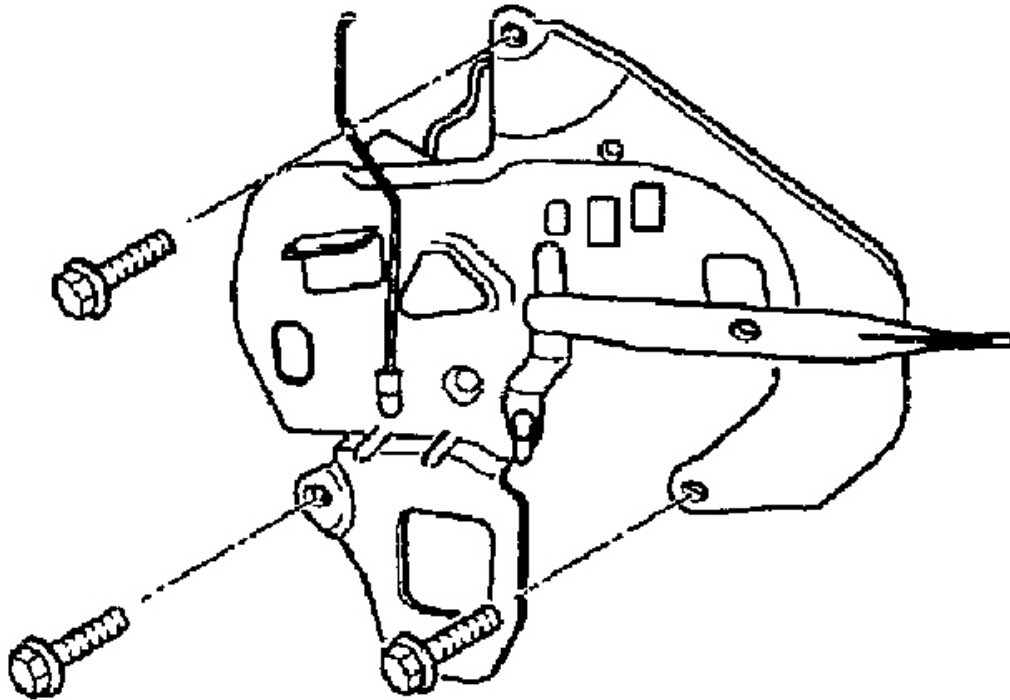


G02177574

Fig. 10: Removing Door Lock Assembly
Courtesy of KIA MOTORS AMERICA, INC.

INSTALLATION

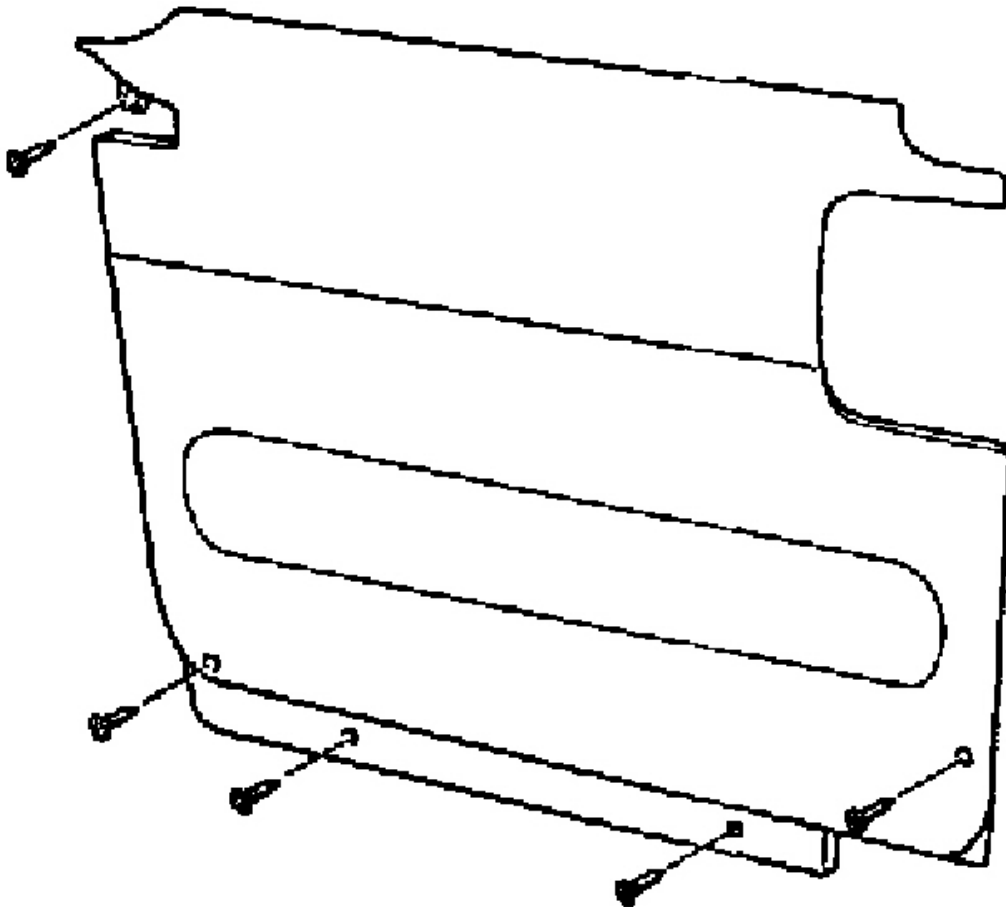
1. Install door lock assembly.



G02177577

Fig. 11: Installing Door Lock Assembly
Courtesy of KIA MOTORS AMERICA, INC.

2. Install door screen.
3. Install screws and door trim.



G02177568

Fig. 12: Installing Door Trim

Courtesy of KIA MOTORS AMERICA, INC.

4. Install three mounting screws and lower roller cover.

WIRING DIAGRAMS

Fig. 13: Keyless Entry Circuit (1 of 2)

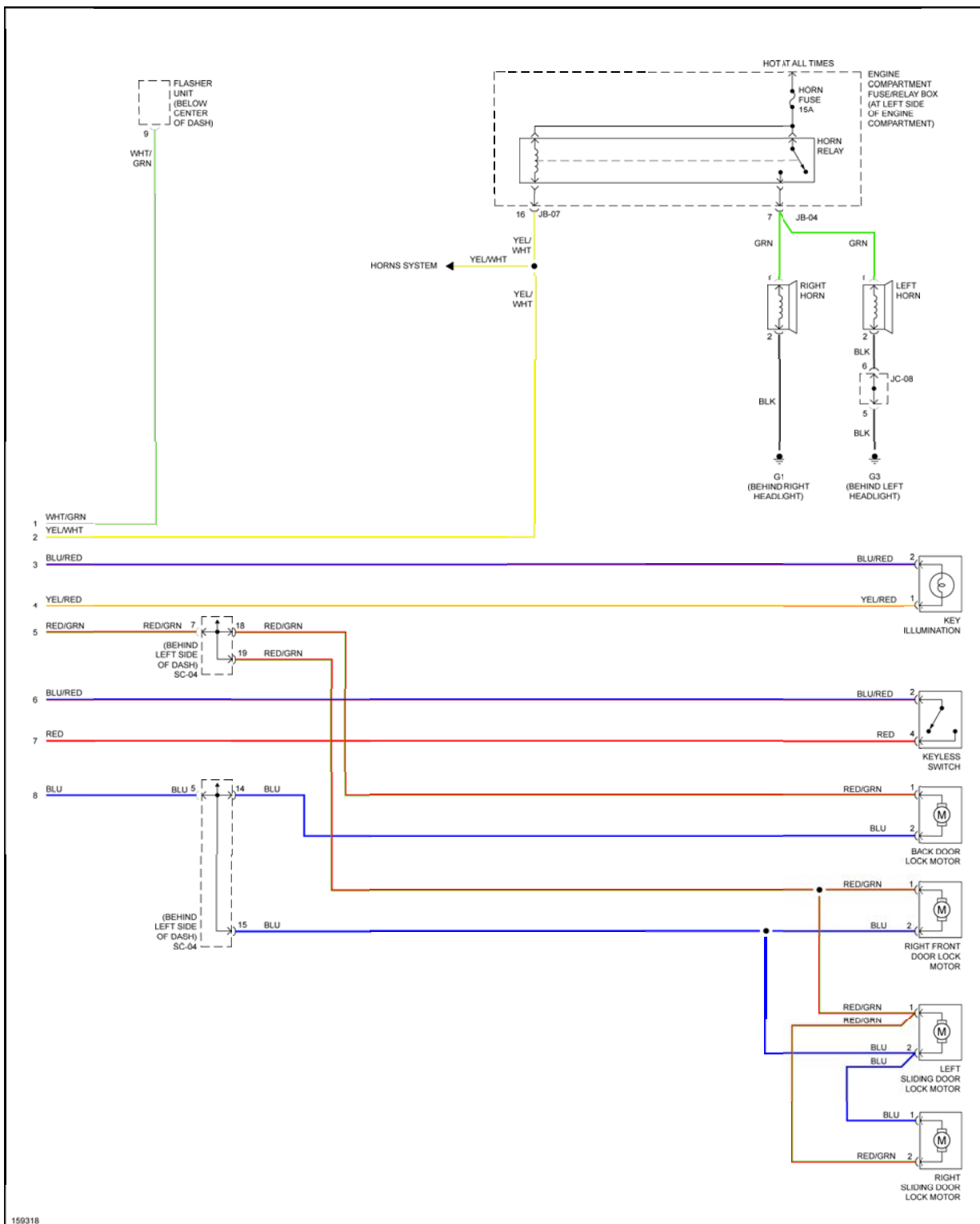


Fig. 14: Keyless Entry Circuit (2 of 2)



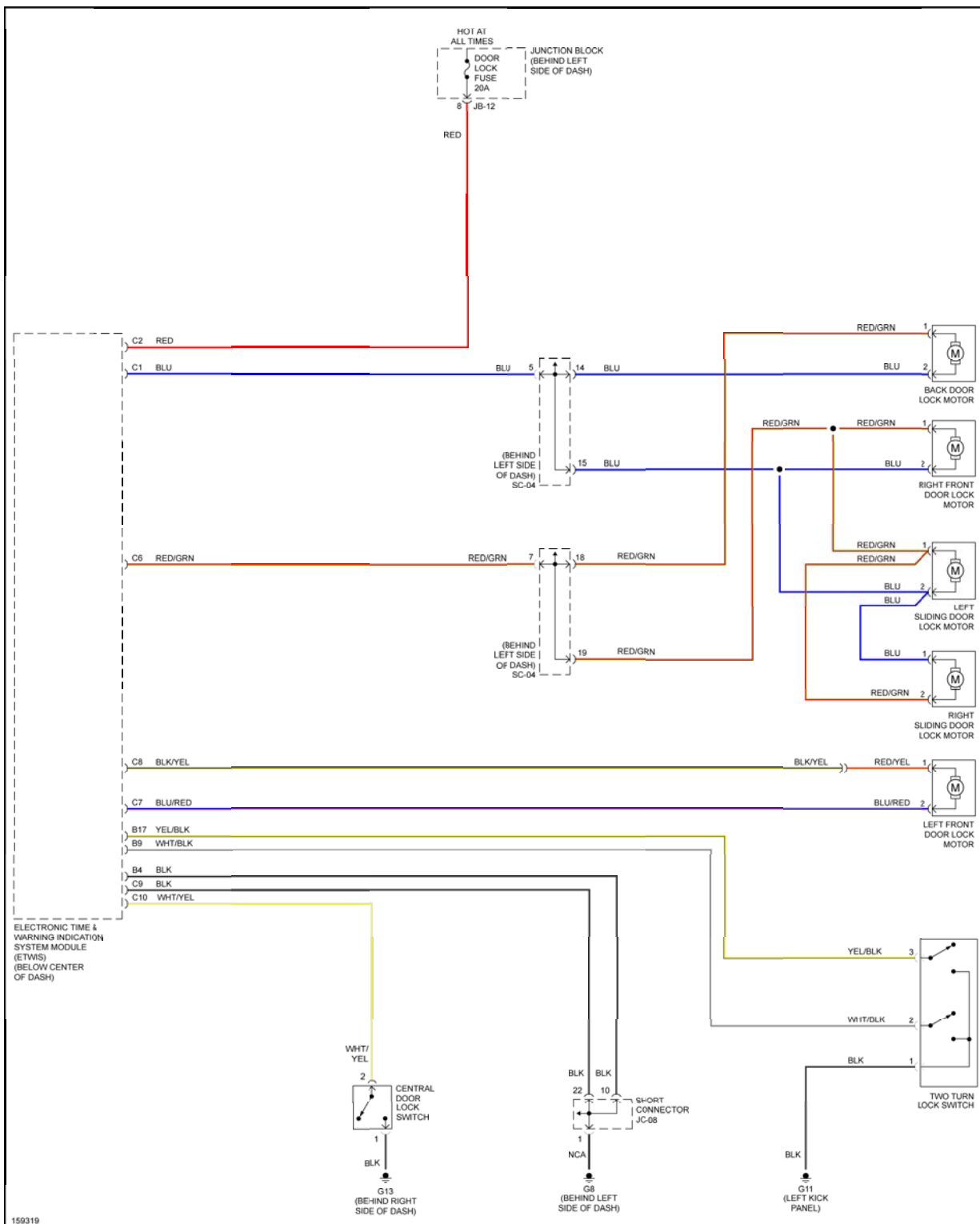


Fig. 15: Power Door Lock Circuit

